

**Baseline children**

**Questionnaires**

birth (0-17), baseline (4-7, 8-12, 13-17), nutrition (4-12, 13-17), behavior (8-17), adolescents (13-17)

**Biomaterial collection (8-17)**

DNA, fasting blood, timed overnight urine

**Laboratory analyses (8-17)**

blood biomarkers, urine biomarkers

**Measurements (8-17)**

anthropometry, blood pressure, ECG (13+), long function test

**Questionnaires baseline children**

birth (0-17)

birth, environment, environment during pregnancy, health status first 6 months, medication use, medication use during pregnancy nutrition, pregnancy, smoking and alcohol use during pregnancy, vaccination, Well Baby Clinic data, work during pregnancy

baseline (4-7, 8-12, 13-17)

alcohol and drug use, behavior, child care, daytime spending, development, environment, family support, health care, health status, learning and education, living situation, medication use, nutrition, physical activity, physical development (also specific for boys and girls in puberty), smoking, surgery, vision and hearing, work

nutrition (4-12, 13-17)

behavior (8-17)

behavior and stress

adolescents (13-17)

alcohol and drugs use, asthma, behavior, daytime spending, health status, living situation, medication use, nutrition, parents, physical activity, physical development (also specific for boys and girls), school and work, smoking

**Biomaterial storage baseline children**

Blood: serum (septum separated tube, tube with clot activator), plasma (K2-EDTA tube, citrate tube), -80°C storage

DNA: -80°C and 4°C storage

Urine: timed overnight (native, mixed with ascorbic acid), -80°C storage

Scalp hair: room temperature

**Biomarkers baseline children**

Blood: cholesterol, creatinine, erythrocytes, glucose, HbA1c, HDL cholesterol, hemoglobin, hematocrit, LDL cholesterol, leukocytes, potassium, thrombocytes, triglycerides

Urine: creatinine

**Second screening children**

**Questionnaires**

children (4-12), adolescents (13-17)

**Biomaterial collection (8-17)**

DNA, fasting blood, timed overnight urine, scalp hair

**Laboratory analyses (8-17)**

blood biomarkers, urine biomarkers

**Measurements (8-17)**

anthropometry, blood pressure, jump test, Cogstate (13-17)

**Questionnaires second screening children**

children (4-12), adolescents (13-17)

asthma, behavior, contact with peers, family composition, fatigue, food allergy, hay fever, health, lifestyle, nutrition, over the counter medication, physical activity, physical development, school, screen time, sleep, stress and life events

children (4-12): eczema, family, length, weight

adolescents (13-17): alcohol, drugs, internet use, parents, pets, smoking, work

**Biomaterial storage second screening children**

Blood: serum (septum separated tube, tube with clot activator), plasma (K2-EDTA tube, citrate tube), -80°C storage

DNA: -80°C and 4°C storage

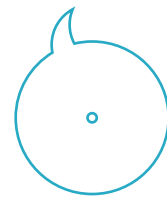
Urine: timed overnight (native, mixed with ascorbic acid), -80°C storage

Scalp hair: room temperature

**Biomarkers second screening children**

Blood: cholesterol, creatinine, erythrocytes, glucose, HbA1c, HDL cholesterol, hemoglobin, hematocrit, LDL cholesterol, leukocytes, potassium, thrombocytes, triglycerides

Urine: creatinine



Questionnaire



Biomaterial



Measurements



Biomarkers

